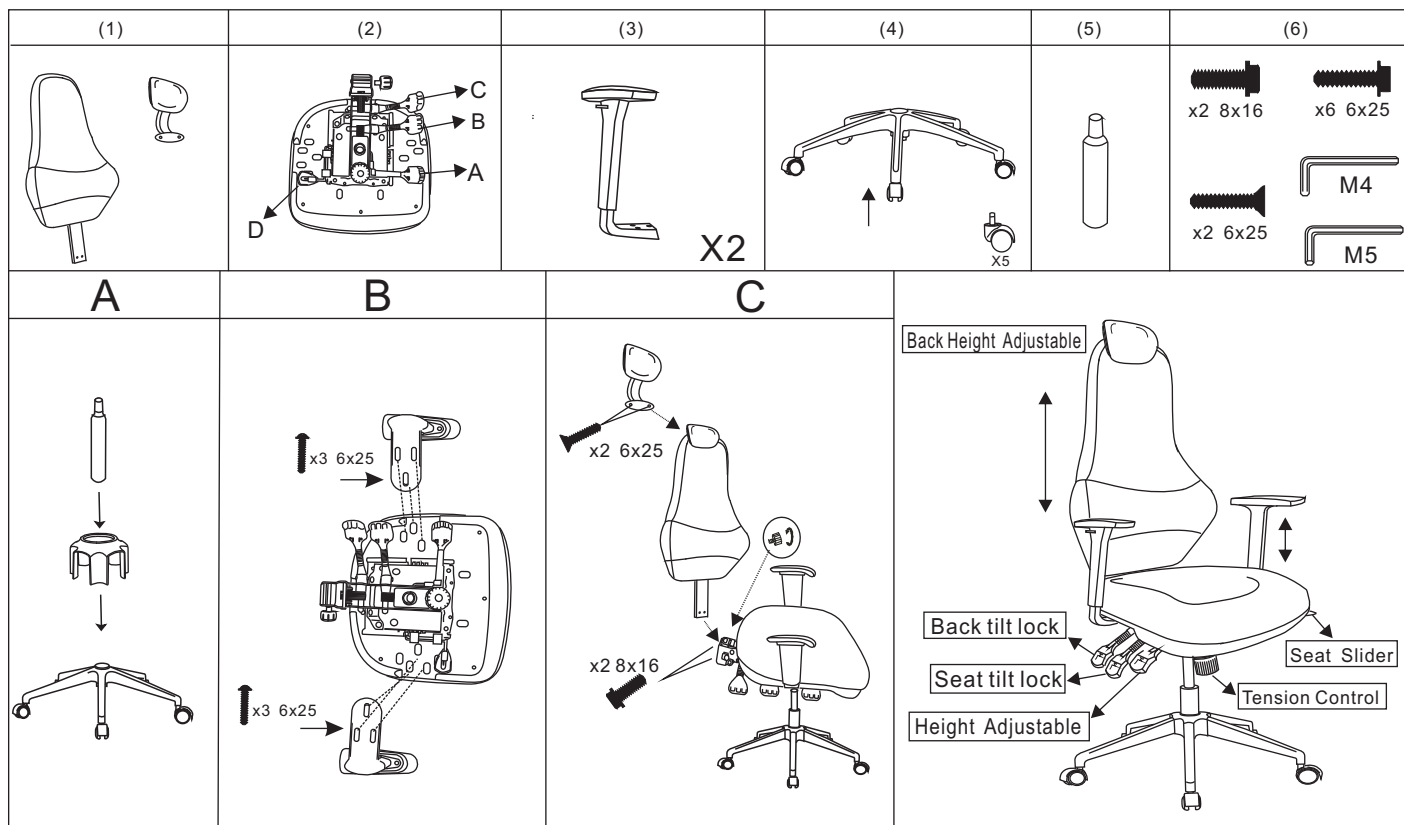


# ERGORA



## USER INFORMATION

**Height adjustable:** Lift lever A

**Seat tilt lock:** Lift lever B up/down

**Back tilt/lock:** Lever C up/down

**Back height adjustable:** Lift back

**Tension control:** Turn knob to make chair suit your weight

**Seat slider:** Push lever D to control seat slide forward and backward

\*Your forearms should be close to horizontal by pressing button of armrest to adjust the height of armrest.

Armrest can be moved for left, right, forward and backward

## CHAIR CARE

\*Clean regularly

\*Use leather cleaner where leather is applicable

\*Use wet towel where is applicable

\*Test on concealed area before proceeding

## WARNING

\*Do not use this chair unless all bolts/knob are tightened and this chair is assembled firmly and properly

\*This chair is for one person to sit on. Do not stand on the chair

\*Do not touch mechanism except lever handle/knob when people sitting in

\*Only trained personel replace or reparae clinder

\*Failure to follow these warnings could result in serious injury