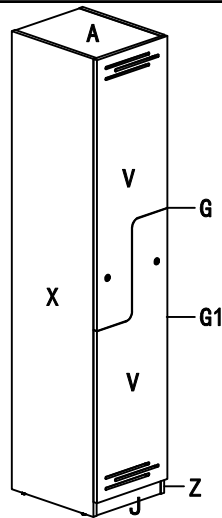


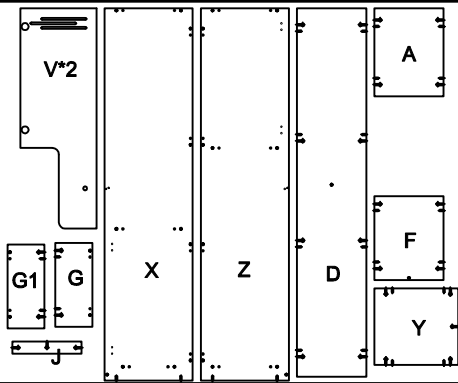
Assembly Instructions

MODEL NO:SDML-1 SDWRML-380/2 S-SDWRML-380/2 SDWRML-400/2 SDWRML-380/2

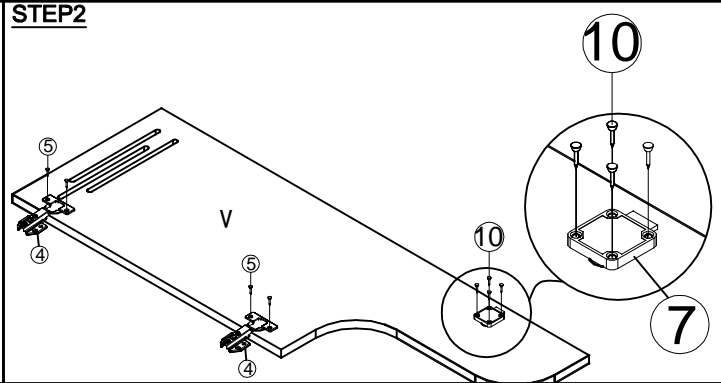


Pin 6x35 28PCS 1	Wood Screw 4x16 34PCS 5	Wood Screw 3.5x13 4PCS 9	73x23x15 2PCS 13
Cam 28PCS 2	ADJ. Feet 4PCS 6	Wood Screw 4x20 8PCS 10	ø6x40 2PCS 14
Cam Cover 28PCS 3	Lock 2PCS 7	Cloth Rail 344W 1PCS 11	Wood Screw 4x40 2PCS 15
Hinge (full-overlay) 4PCS 4	Lock Catcher 2PCS 8	Cloth Rail 163W 1PCS 12	

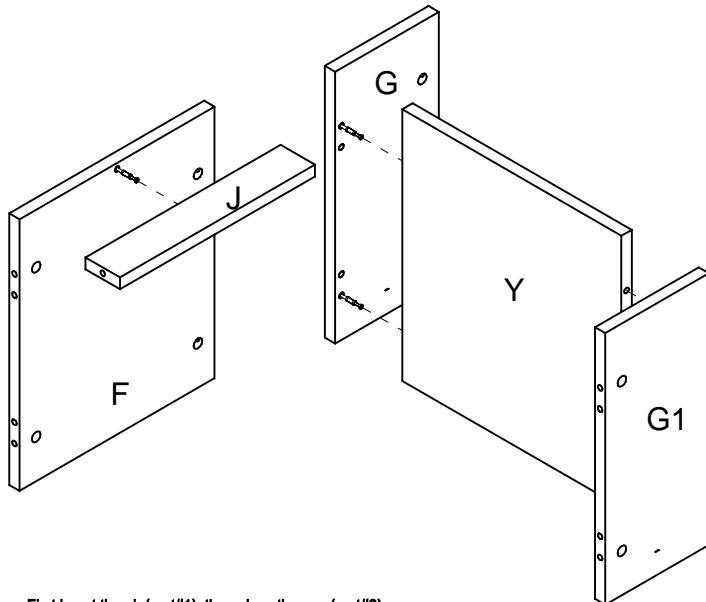
STEP1



STEP2

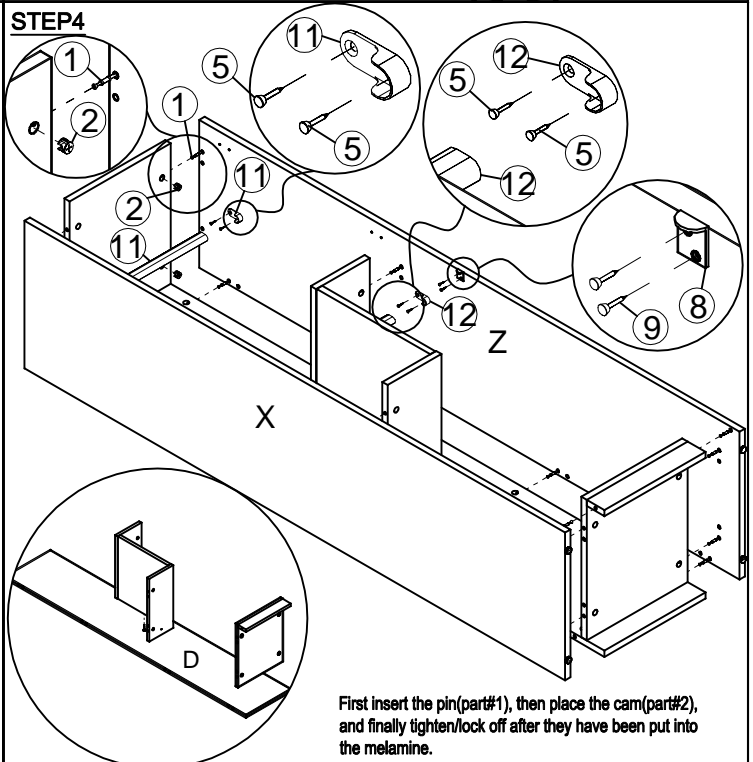


STEP3



First insert the pin(part#1), then place the cam(part#2), and finally tighten/lock off after they have been put into the melamine.

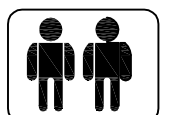
STEP4



First insert the pin(part#1), then place the cam(part#2), and finally tighten/lock off after they have been put into the melamine.

IMPORTANT NOTE:

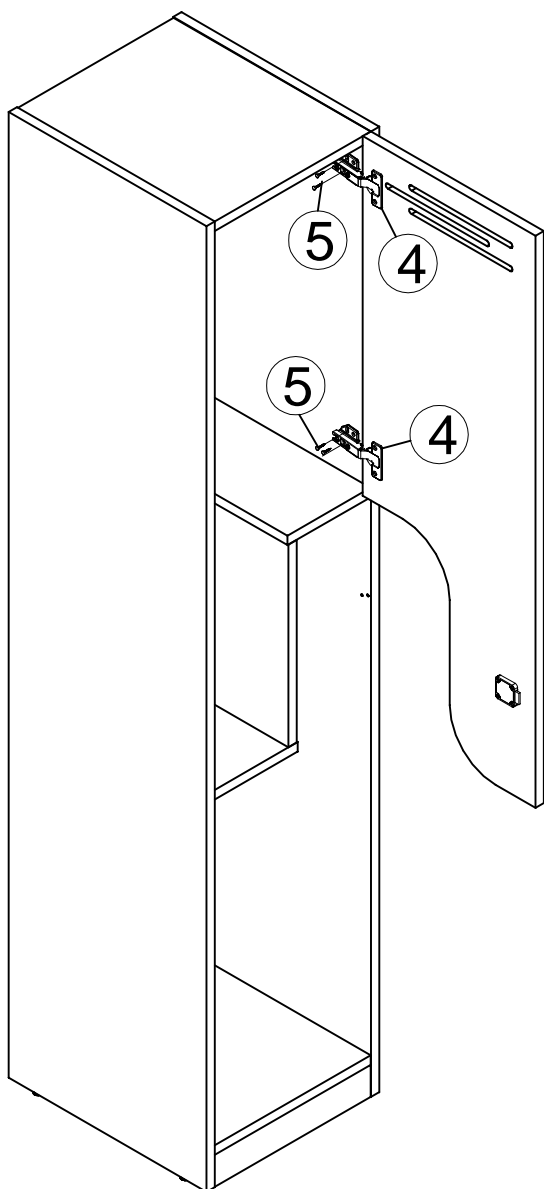
- Place all laminated parts on a clean and smooth surface such as a rug or carpet to avoid the parts from being scratched.
- Check to be sure that you have all parts and hardware.
- Remove all wrapping materials, including staples & packing straps before you start to assemble.
- Don't tighten all screws/bolts until all completely assembled.
- Keep all hardware parts out of reach of children



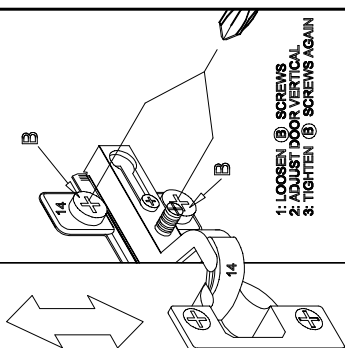
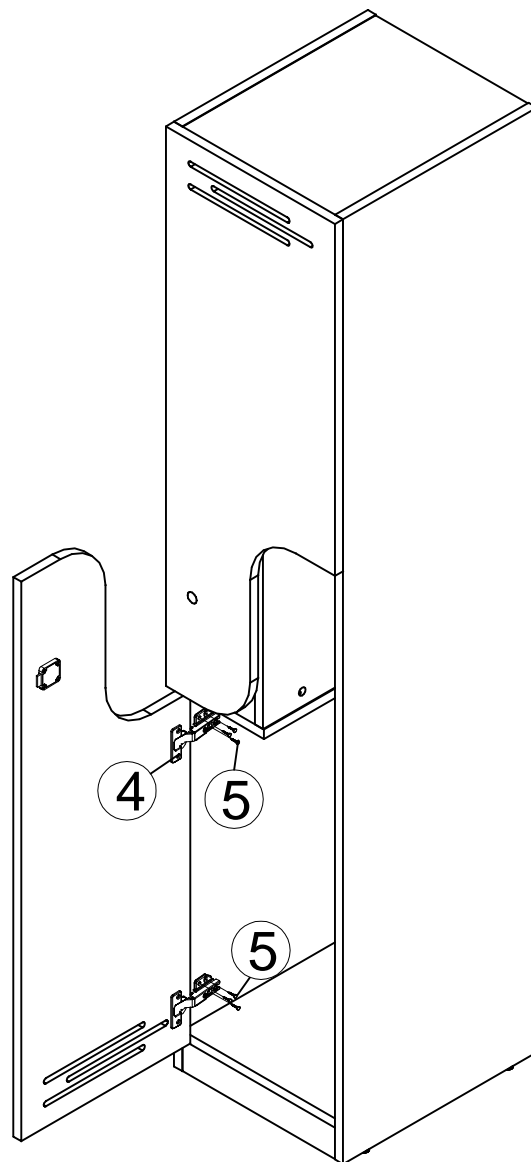
Assembly Instructions

MODEL NO:SDML-1 SDWRML-380/2 S-SDWRML-380/2 SDWRML-400/2 SDWRML-380/2

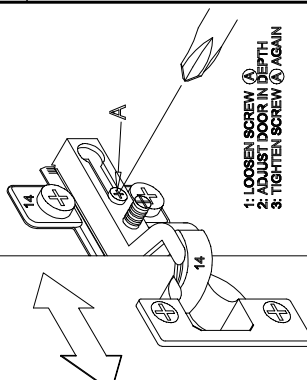
STEP5



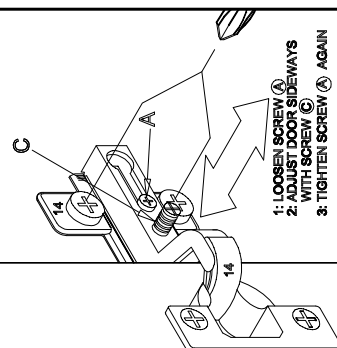
STEP6



1: LOOSEN SCREW (A)
2: ADJUST DOOR VERTICAL
3: TIGHTEN SCREW (A) AGAIN



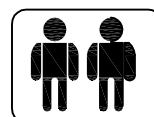
1: LOOSEN SCREW (A)
2: ADJUST DOOR IN DEPTH
3: TIGHTEN SCREW (A) AGAIN



1: LOOSEN SCREW (A)
2: ADJUST DOOR INWAYS
WITH SCREW (C)
3: TIGHTEN SCREW (A) AGAIN

IMPORTANT NOTE:

- Place all laminated parts on a clean and smooth surface such as a rug or carpet to avoid the parts from being scratched.
- Check to be sure that you have all parts and hardware.
- Remove all wrapping materials, including staples & packing straps before you start to assemble.
- Don't tighten all screws/bolts until all completely assembled.
- Keep all hardware parts out of reach of children



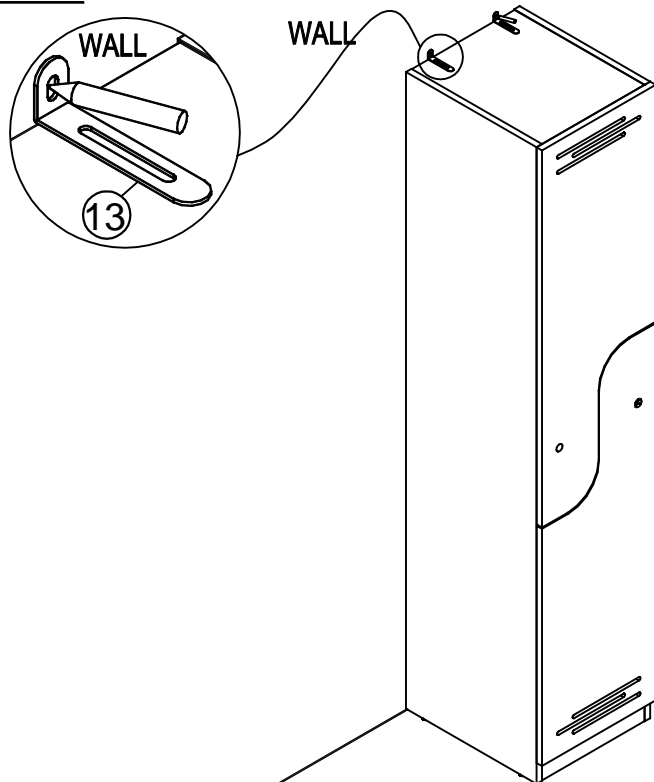
Assembly Instructions

MODEL NO: SDML-1 SDWRML-380/2 S-SDWRML-380/2
SDWRML-400/2

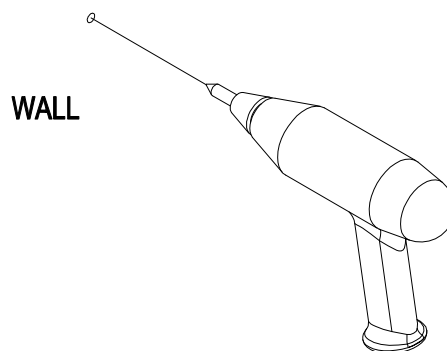
The warning sticker provided within this hardware kit **MUST** be attached to the piece furniture in a place that is 100% visible when the item is empty.

STEP7

Make a mark with a pencil

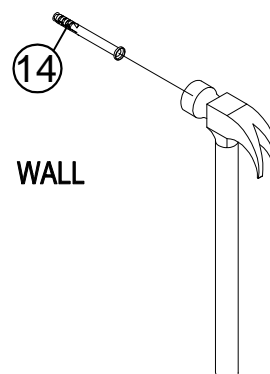


STEP8



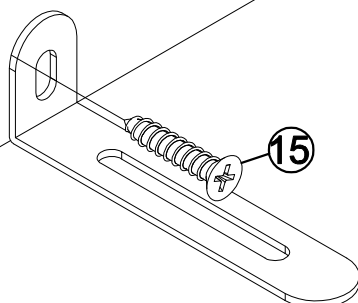
Drill holes at the marks with an electric drill

STEP9



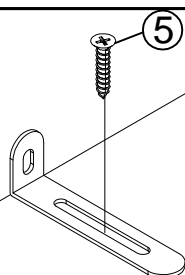
STEP10

WALL



STEP11

WALL



⚠ WARNING



Children have died from furniture tipover.

- ALWAYS secure it with an anchor device.
- NEVER allow children to stand, climb or hang on drawers, doors, or shelves.
- NEVER open more than one drawer at a time.
- Place heavy items down low.

NEVER put a TV on this furniture



This furniture type is at high risk of toppling over

Ask staff for more information or visit <https://www.productsafety.gov.au>

IMPORTANT NOTE:

- Place all laminated parts on a clean and smooth surface such as a rug or carpet to avoid the parts from being scratched.
- Check to be sure that you have all parts and hardware.
- Remove all wrapping materials, including staples & packing straps before you start to assemble.
- Don't tighten all screws/bolts until all completely assembled.
- Keep all hardware parts out of reach of children

