

## HEIGHT ADJUSTABLE WORKSTATION RANGE



rapidline

**Boost  
& Halo  
Range**

[www.rapidline.com.au](http://www.rapidline.com.au)

# RAPIDLINE WORKSTATIONS

**Rapidline offers a complete range of commercial grade workstations with advanced features, available in a range of sizes and finishes to suit all workspaces.**

Supported by commercial warranties, and selected from Sedex compliant factories, you can have peace of mind that Rapidline workstations maintain high quality standards and are built to stand the test of time.

With warehouses across Brisbane, Sydney, Melbourne, Adelaide and Perth, and a local customer service team in each state, Rapidline can provide workstation solutions off the shelf, available for immediate delivery.



# Contents

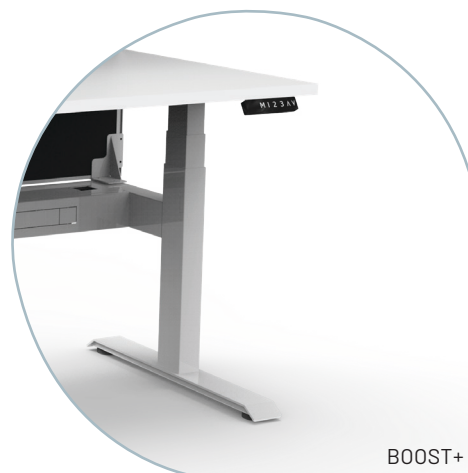
<b>Boost &amp; Halo Range</b>	<b>4</b>
<b>Halo+</b>	<b>5-8</b>
Single Workstations	6
Back to Back Workstations	7
Corner Workstations	8
<b>Boost+</b>	<b>9-12</b>
Single Workstations	10
Back to Back Workstations	11
Corner Workstations	12
<b>Boost Static &amp; Boost Light</b>	<b>13-17</b>

<b>Boost Static</b>	<b>14-16</b>
Single Workstations	14
Back to Back Workstations	15
Corner Workstations	16
<b>Boost Light</b>	<b>17</b>
Single Workstations	17
<b>Add-Ons</b>	<b>18</b>
<b>Frames</b>	<b>19-21</b>
<b>Accessories</b>	<b>22-23</b>

# BOOST & HALO WORKSTATIONS

WHICH RANGE SUITS YOU?

Product	Height Adjustable	Cable Tray Option	Privacy Screen Option	Back to Back Option	Corner Option	Motor	Lifting Capacity	Adjustment speed	Legs
Boost Static	X	✓	✓	✓	✓	N/A	N/A	N/A	Single Column
Boost Light	✓	✓	✓	X	X	Single	80kg	25mm p/sec	3 Stage
Boost+	✓	✓	✓	✓	✓	Dual	120kg	38mm p/sec	3 Stage
Halo+	✓	✓	✓	✓	✓	Dual	120kg	38mm p/sec	3 Stage





# HALO+ WORKSTATION RANGE

**Introducing the latest addition to the Rapidline height adjustable workstation range, the Halo+ boasts a designer round leg with options for privacy screens and tidy cable trays.**

With a digital control panel featuring three pre-set positions, an LED display panel, keypad safety lock, and reminder alarm setting, you can easily adjust your workstation to your preferred height with just the touch of a button.

The innovative anti-collision and anti-tilt technology ensures that your desk is protected from accidental damage, while operating quietly with a noise emission of less than 50DB.

Choose from single, corner and back to back configurations.



**AFRDI certified and backed by a 10 year warranty across the range.**



## HALO+ SINGLE WORKSTATION

### Features:

- Height adjustable workstation
- Available widths: 1200mm, 1500mm or 1800mm
- Digital control panel with 3 pre-set positions, LED display panel, keypad safety lock & reminder alarm setting
- Dual motor with round leg design
- Smooth & quiet adjustment at 38mm per second
- 620-1270mm height adjustment
- 120kg weight lifting capacity
- 70mm column diameter
- Adjustable leveling feet with a foot size of 700mm
- Underframe finished in white or black satin powdercoat
- E0 rated melamine tops available in Natural White or Natural Oak
- 750mm D top with scalloped cable access

### Add-ons:

- Fully ducted cable tray with punchout for power & data to be fitted to either external or internal of frame
- Optional cable snake and bridge upgrades available to manage power and data cords to keep your workspace safe and tidy
- Cable trays available in black or white to match the workstation frame
- 900mm H x 30mm T pinnable privacy screen
- Screens in black fabric with white powdercoat extrusion, grey fabric with black extrusion, or custom upholstery



H+1P1875



H+1PCT1875



H+1PWS1875



H+1PWSCT1875



Top Finishes:



Frame Finishes:



Screen Finishes:



## HALO+

### BACK TO BACK WORKSTATION

#### Features:

- Suits 2 users with independent height adjustment
- Available widths: 1200mm, 1500mm or 1800mm
- Digital control panel with 3 pre-set positions, LED display panel, keypad safety lock & reminder alarm setting
- Dual motor with round leg design
- Smooth & quiet adjustment at 38mm per second
- 620-1270mm height adjustment
- 120kg per user lifting capacity
- 70mm column diameter
- Adjustable leveling feet with a foot size of 700mm
- Underframe finished in white or black satin powdercoat
- E0 rated melamine tops available in Natural White or Natural Oak
- 750mm D top with scalloped cable access

#### Add-ons:

- Fully ducted cable tray with punchout for power & data to be fitted to either external or internal of frame
- Optional cable snake and bridge upgrades available to manage power and data cords to keep your workspace safe and tidy
- Cable trays available in black or white to match the workstation frame
- 900mm H x 30mm T pinnable privacy screen
- Screens in black fabric with white powdercoat extrusion, grey fabric with black extrusion, or custom upholstery

H+2P1275

H+2PCT1275

H+2PWS1275

H+2PWSCT1275



Top Finishes:



Frame Finishes:



Screen Finishes:



## HALO+ CORNER WORKSTATION

### Features:

- Height adjustable corner workstation for more desk space
- Available top sizes: 1500x1500mm, 1800x1800mm & 1800x1500mm
- Digital control panel with 3 pre-set positions, LED display panel, keypad safety lock & reminder alarm setting
- Dual motor with round leg design
- Smooth & quiet adjustment at 38mm per second
- 620-1270mm height adjustment
- 140kg weight lifting capacity
- 70mm column diameter
- Underframe finished in white or black satin powdercoat
- E0 rated melamine tops available in Natural White or Natural Oak
- 750mm D top with scalloped cable access

### Add-ons:

- Fully ducted cable tray with punchout for power & data to be fitted to either external or internal of frame
- Optional cable snake and bridge upgrades available to manage power and data cords to keep your workspace safe and tidy
- Cable trays available in black or white to match the workstation frame
- 900mm H x 30mm T pinnable privacy screen
- Screens in black fabric with white powdercoat extrusion, grey fabric with black extrusion, or custom upholstery



H+CNR1P1515



H+CNRCT1P1818



H+CNRWS1P1515



H+CNRWSCT1P1818



Top Finishes:



Frame Finishes:



Screen Finishes:





# BOOST+ WORKSTATION RANGE

**The Rapidline Boost+ continues to lead the way in height adjustable workstation solutions within the commercial furniture industry.**

With low noise emission and easy assembly, Boost+ goes above and beyond to meet and exceed the Australian standards for height adjustable workstations across the board.

Featuring advanced anti-collision and anti-tilt technology, quiet adjustment at 38mm per second, and a 120kg+ weight rating, this workstation ticks all the boxes for durability and stability, while being easily operated from the touch of an LED digital controller.

Available in a variety of configurations from single, corner and back to back, with privacy screen and cable tray options.



**AFRDI certified and backed by a 10 year warranty across the range.**





## BOOST+ SINGLE WORKSTATION

### Features:

- Height adjustable workstation
- Available widths: 1200mm, 1500mm or 1800mm
- Digital control panel with 3 pre-set positions, LED display panel, keypad safety lock & reminder alarm setting
- Dual motor with 3 stage motorised legs
- 120kg weight lifting capacity, adjusts at 38mm per second
- Column size of 90mm x 60mm
- Height range of 620mm - 1270mm H
- Underframe finished in white or black satin powdercoat
- E0 rated melamine tops available in Natural White or Natural Oak
- 750mm D top with scalloped cable access

### Add-ons:

- Fully ducted cable tray with punchout for power & data to be fitted to either external or internal of frame
- Optional cable snake and bridge upgrades available to manage power and data cords to keep your workspace safe and tidy
- Cable trays available in black or white to match the workstation frame
- 900mm H x 30mm T pinnable privacy screen
- Screens in black fabric with white powdercoat extrusion, grey fabric with black extrusion, or custom upholstery
- Optional Portable Battery Packs allows desk mobility free from GPOs



B+1P1875



B+1PCT1875



B+1PWS1875



B+1PWSCT1875



Top Finishes:



Frame Finishes:



Screen Finishes:



## BOOST+ BACK TO BACK WORKSTATION

### Features:

- Suits 2 users with independent height adjustment
- Available widths: 1200mm, 1500mm or 1800mm
- Digital control panel with 3 pre-set positions, LED display panel, keypad safety lock & reminder alarm setting
- Dual motor with 3 stage motorised legs
- 120kg weight lifting capacity per desk
- Column size of 90mm x 60mm
- Height range of 620mm - 1270mm H
- Underframe finished in white or black satin powdercoat
- E0 rated melamine tops available in Natural White or Natural Oak
- 750mm D top per user with scalloped cable access

### Add-ons:

- Fully ducted cable tray with punchout for power & data to be fitted to either external or internal of frame
- Optional cable snake and bridge upgrades available to manage power and data cords to keep your workspace safe and tidy
- Cable trays available in black or white to match the workstation frame
- 900mm H x 30mm T pinnable privacy screen
- Screens in black fabric with white powdercoat extrusion, grey fabric with black extrusion, or custom upholstery
- Optional Portable Battery Packs allows desk mobility free from GPOs



B+2P1275



B+2PCT1275



B+2PWS1275



B+2PWSCT1875



Top Finishes:



Frame Finishes:



Screen Finishes:



## BOOST+ CORNER WORKSTATION

### Features:

- Height adjustable corner workstation for more desk space
- Available top sizes: 1500x1500mm, 1800x1800mm & 1800x1500mm
- Digital control panel with 3 pre-set positions, LED display panel, keypad safety lock & reminder alarm setting
- Dual motor with 3 stage motorised legs
- Smooth & quiet adjustment at 38mm per second
- 140kg weight lifting capacity per desk
- Column size of 90mm x 60mm
- Height range of 620mm - 1270mm H
- Underframe finished in white or black satin powdercoat
- E0 rated melamine tops available in Natural White or Natural Oak
- 750mm D top with scalloped cable access

### Add-ons:

- Fully ducted cable tray with punchout for power & data to be fitted to either external or internal of frame
- Optional cable snake and bridge upgrades available to manage power and data cords to keep your workspace safe and tidy
- Cable trays available in black or white to match the workstation frame
- 900mm H x 30mm T pinnable privacy screen
- Screens in black fabric with white powdercoat extrusion, grey fabric with black extrusion, or custom upholstery



B+CNR1P1818



B+CNRCT1P1818



B+CNRWS1P1818



B+CNRWSCT1P1818



Top Finishes:



Frame Finishes:



Screen Finishes:




# BOOST STATIC & BOOST LIGHT WORKSTATION RANGES

New additions to the Rapidline Boost range, Boost Light and Boost Static are here to stay with their quality features and affordable price tag.

As an alternative to the popular Boost+, the Boost Light features a single motor with 80kg lifting capacity and 25mm per second height adjustment. Available as a straight open desk, with cable tray and privacy screen options.

The Boost Static is a fixed height workstation which perfectly complements the Boost+ range. Available in single, back to back, and corner workstations, The Boost Static is designed to meet your daily needs by combining functionality, durability and a sleek aesthetic.

 **Backed by a 10 year warranty  
across both ranges**





## BOOST STATIC WORKSTATIONS

# BOOST STATIC SINGLE WORKSTATION

### Features:

- Fixed height workstation to match Boost+ range
- Available widths: 1200mm, 1500mm or 1800mm
- Telescopic frame 1100mm - 1800mm wide
- Column size of 90mm x 60mm
- Foot size of 700mm
- Fixed height of 730mm
- Underframe finished in white or black satin powdercoat
- E0 rated melamine tops available in Natural White or Natural Oak
- 750mm D top with scalloped cable access

### Add-ons:

- Fully ducted cable tray with punchout for power & data to be fitted to either external or internal of frame
- Optional cable snake and bridge upgrades available to manage power and data cords to keep your workspace safe and tidy
- Cable trays available in black or white to match the workstation frame
- 900mm H x 30mm T pinnable privacy screen
- Screens in black fabric with white powdercoat extrusion, grey fabric with black extrusion, or custom upholstery



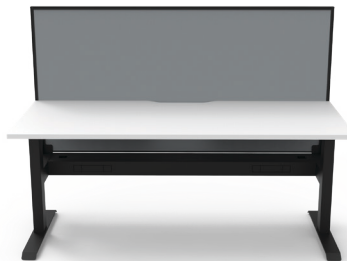
SB1P1275



SB1PCT1275



SB1PWS1275



SB1PWSCT1275

Top Finishes:



Frame Finishes:



Screen Finishes:





## BOOST STATIC WORKSTATIONS

# BOOST STATIC

## BACK TO BACK WORKSTATION

### Features:

- Suits 2 users
- Fixed height workstation to match Boost+ range
- Available widths: 1200mm, 1500mm or 1800mm
- Telescopic frame 1100mm - 1800mm wide
- Column size of 90mm x 60mm
- Foot size of 700mm
- Fixed height of 730mm
- Underframe finished in white or black satin powdercoat
- E0 rated melamine tops available in Natural White or Natural Oak
- 750mm D top with scalloped cable access

### Add-ons:

- Fully ducted cable tray with punchout for power & data to be fitted to either external or internal of frame
- Optional cable snake and bridge upgrades available to manage power and data cords to keep your workspace safe and tidy
- Cable trays available in black or white to match the workstation frame
- 900mm H x 30mm T pinnable privacy screen
- Screens in black fabric with white powdercoat extrusion, grey fabric with black extrusion, or custom upholstery



SB2P1275



SB2PCT1275



SB2PWS1275



SB2PWSCT1275

Top Finishes:



Frame Finishes:



Screen Finishes:



## BOOST STATIC CORNER WORKSTATION

### Features:

- Fixed height workstation to match Boost+ range
- Corner workstation for more desk space
- Available in 1500x1500mm, 1800x1800mm & 1800x1500mm top sizes
- Telescopic frame 1040mm - 2150mm wide
- Column size of 90mm x 60mm
- Foot size of 700mm
- Fixed height of 730mm
- Underframe finished in white or black satin powdercoat
- E0 rated melamine tops available in Natural White or Natural Oak
- 750mm D top with scalloped cable access

### Add-ons:

- Fully ducted cable tray with punchout for power & data to be fitted to either external or internal of frame
- Optional cable snake and bridge upgrades available to manage power and data cords to keep your workspace safe and tidy
- Cable trays available in black or white to match the workstation frame
- 900mm H x 30mm T pinnable privacy screen
- Screens in black fabric with white powdercoat extrusion, grey fabric with black extrusion, or custom upholstery



SBCNR1P1515



SBCNRCT1P1515



SBCNRWS1P1515



SBCNRWSCT1P1515

Top Finishes:



Frame Finishes:



Screen Finishes:



## BOOST LIGHT WORKSTATION

# BOOST LIGHT SINGLE WORKSTATION

### Features:

- Height adjustable workstation
- Available widths: 1200mm, 1500mm or 1800mm
- Digital control panel with 3 pre-set positions, LED display panel, keypad safety lock & reminder alarm setting
- Single motor with noise emission of less than 50DB
- 80kg weight lifting capacity, adjusts at 25mm per second
- Anti-collision technology
- Column size of 90mm x 60mm
- Height range of 620mm - 1270mm H
- Foot size of 700mm
- Underframe finished in white or black satin powdercoat
- E0 rated melamine tops available in Natural White or Natural Oak
- 750mm D top with scalloped cable access

### Add-ons:

- Fully ducted cable tray with punchout for power & data to be fitted to either external or internal of frame
- Optional cable snake and bridge upgrades available to manage power and data cords to keep your workspace safe and tidy
- Cable trays available in black or white to match the workstation frame
- 900mm H x 30mm T pinnable privacy screen
- Screens in black fabric with white powdercoat extrusion, grey fabric with black extrusion, or custom upholstery



BLI1P1275



BLI1PCT1275



SB2PWS1275



SB1PWSCT1275

### Top Finishes:



### Frame Finishes:



### Screen Finishes:





B2-CBSNAKE

Finishes:



## CABLE SNAKE

### Features:

- Flexible cable snakes
- 1200mm L x 45mm W x 30mm D
- 4 x segregation channels
- 1 piece per carton
- Available in black or white to match workstation frame



B2-BTCB

## BLUETOOTH CONTROL BOX

### Features:

- Allows for height adjustment control with smart phone via application. **NOTE:** Only suitable for IOS devices with access to the App Store
- Minimum/Maximum height settings and up/down control

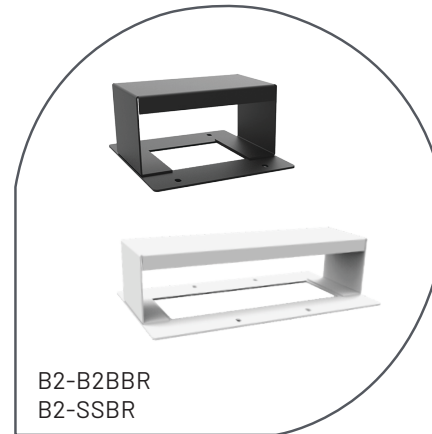


B2-BATT

## BATTERY PACK

### Features:

- For use on all Boost and Halo height adjustable workstations that don't have power access
- Includes control box and power charging adapter
- Battery life up to approximately 30 up-down cycles before needing to be recharged
- Ideal for education and training room applications



B2-B2BBR  
B2-SSBR

Finishes:



## CABLE TRAY BRIDGE

### Features:

- Allows 30mm gap between users

### Boost+ Single Sided Workstation Cable Tray Bridge:

- 100mm W x 175mm D x 94mm H
- Cable tray cover to go between two single sided workstation frames

### Boost+ Single Sided Workstation Cable Tray Bridge

- 100mm W x 350mm D x 94mm H
- Cable tray cover to go between two back to back workstation frames



B2-SSF

Finishes:



## BOOST+ SINGLE SIDED FRAME

### Features:

- Height adjustable frame
- 1100mm - 1800mm telescopic frame
- Column size of 90mm x 60mm
- Foot size of 700mm
- Requires additional arms for cable tray and dividing screen add-ons
- Comes with digital control panel
- **\*For Boost+ range only**



HP-SSF

Finishes:



## HALO+ SINGLE SIDED FRAME

### Features:

- Height adjustable frame
- Stylish and modern round leg
- 1100mm - 1800mm telescopic frame
- 70mm column diameter
- Adjustable levelling feet
- Comes with Digital Control Panel with 3 pre-set positions, LED display panel, keypad safety lock, and reminder alarm setting
- **\*For Halo+ range only**



BLSF

Finishes:



## BOOST LIGHT SINGLE SIDED FRAME

### Features:

- Height adjustable frame
- 1100mm - 1800mm telescopic frame
- Column size: 90mm x 60mm
- Comes with digital control panel
- Adjustable levelling feet
- Anti-collision technology
- **\*For Boost Light range only**



SB-S18

Finishes:



## BOOST STATIC SINGLE SIDED FRAME

### Features:

- Fixed height frame
- 1100mm - 1800mm telescopic frame
- Column size: 90mm x 60mm
- Adjustable levelling feet
- Fixed height of 705mm
- **\*For Boost Static range only**





B2-RF

Finishes:



## BOOST+ RETURN FRAME

### Features:

- Height adjustable frame
- 1040mm - 2150mm telescopic frame
- Suits rectangular return table tops and radial 1 piece corner workstation tops with overall return edge size of 1450mm - 2150mm
- Comes with digital control panel
- Foot size of 500mm
- **\*For Boost+ range only**



HP-RF

Finishes:



## HALO+ RETURN FRAME

### Features:

- Height adjustable frame
- Stylish and modern round leg
- 1040mm - 2150mm telescopic frame
- Suits rectangular return table tops and radial 1 piece corner workstation tops with overall return edge size of 1450mm - 2150mm
- Adjustable levelling feet
- Comes with digital control panel
- **\*For Halo+ range only**



SB-RF1021

Finishes:



## BOOST STATIC RETURN FRAME

### Features:

- Fixed height frame
- 1040mm - 2150mm telescopic frame
- Suits rectangular return table tops and radial 1 piece corner workstation tops with overall return edge size of 1450mm - 2150mm
- Fixed height of 705mm
- **\*For Boost Static range only**



B2-BTBF

Finishes:



## BOOST+ BACK TO BACK FRAME

### Features:

- Height adjustable frame
- 1100mm - 1800mm telescopic frame
- Column size: 90mm x 60mm
- Comes with mounting provisions for screens and cable trays
- Comes with digital control panel
- Includes independent height adjustment per desk
- **\*For Boost+ range only**



HP-BTBF

Finishes:



## HALO+ BACK TO BACK FRAME

### Features:

- Height adjustable frame only
- Fits 2 users
- 1100mm - 1800mm telescopic frame
- Comes with digital control panel
- Includes independent height adjustment per desk
- 70mm column diameter
- **\*For Halo+ range only**



SB-BTBF18

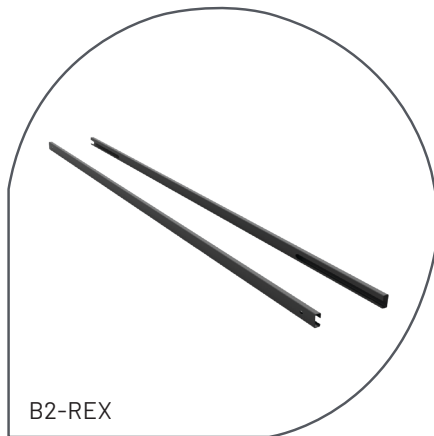
Finishes:



## BOOST STATIC BACK TO BACK FRAME

### Features:

- Fixed height frame
- 1100mm - 1800mm telescopic frame
- Column size: 90mm x 60mm
- Fixed height of 705mm
- Adjustable levelling feet
- **\*For Boost Static range only**



B2-REX

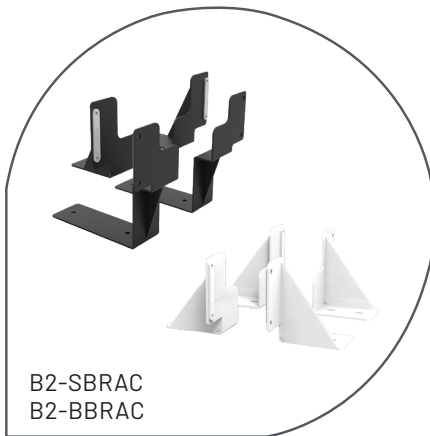
Finishes:



## RAIL EXTENSION

### Features:

- Rail extension beams
- 1600mm W x 30mm H x 15mm D
- 2 pieces per carton
- Suits 2100mm - 2400mm W workstations



B2-SBRAC  
B2-BBRAC

Finishes:



## SCREEN BRACKET

### Features:

#### Boost+ Single Sided Workstation Screen Bracket

- Set of 2 per carton

#### Boost+ Back to Back Workstation Screen Bracket

- Set of 4 per carton



B2-SSCT12  
B2-SSCT15  
B2-SSCT18

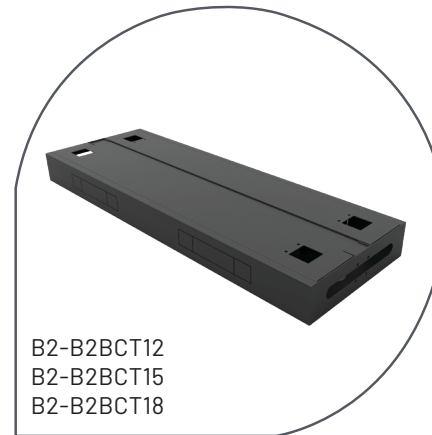
Finishes:



## SINGLE SIDED CABLE TRAY

### Features:

- Internal segregation for power & data
- External and internal power & data punch out provisions
- Four external punchouts at 230mm x 42mm and two internal punchouts at 230mm x 42mm
- Solid steel cable tray lid with two access holes for cable snakes
- 175mm D x 90mm H
- Available widths: 1010mm, 1310mm and 1610mm



B2-B2BCT12  
B2-B2BCT15  
B2-B2BCT18

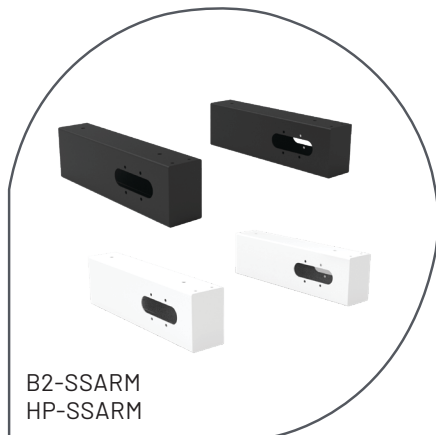
Finishes:



## BACK TO BACK CABLE TRAY

### Features:

- Internal segregation for power & data
- External and internal power & data punch out provisions
- 4x external punchouts at 230mm X 42mm and 2x internal punchouts at 230mm x 42mm
- Solid steel cable tray lid with two access holes for cable snakes
- 350mm D x 90mm H
- Available widths: 1010mm, 1310mm and 1610mm



B2-SSARM  
HP-SSARM

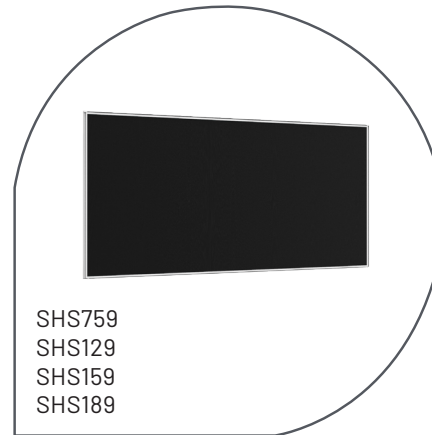
Finishes:



## SINGLE SIDED ARM

### Features:

- Single sided workstation cable tray and screen mounting arm
- Comes as a set of 2
- 315mm W x 60mm D x 90mm H
- **\*B2-SSARM for Boost only**
- **\*HP-SSARM for Halo only**



SHS759  
SHS129  
SHS159  
SHS189

Screen Finishes:



## 900MM HEIGHT SCREEN

### Features:

- Available widths: 1200mm, 1500mm, 1800mm, and a 750mm return screen
- Slimline 30mm screen
- Pinnable full fabric surface
- Can be fixed at any height on a desk
- Functions as a screen and as a modesty panel
- Available in other screen heights. Ask us today.



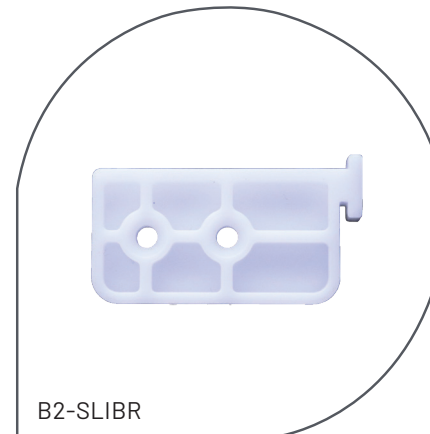
Finishes:



## SHUSH30+ JOINING POLES

### Features:

- 360 degree screen joining poles
- 30mm W x 30mm D
- Includes all hooks and cover plates
- Adjustable levelling foot included
- Available heights: 900mm, 1330mm
- **\*See below**



## NYLON GLIDE BRACKETS

### Features:

- The Boost+ and Halo+ can be used with a full height 1200mm or 1500mm high Shush30+ screen by attaching a nylon glide bracket
- Works with Boost+ and Halo+ single sided workstations without screens
- Brackets are screwed into workstation tops and fitted to the screen extrusions, allowing smooth adjustment of the workstation while holding the screen steadily in place
- Comes as a set of 2 (1x right, 1x left)



Screen Finishes:

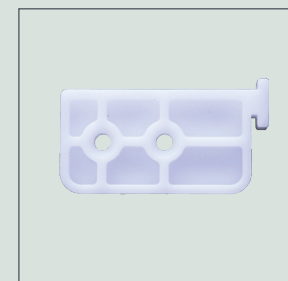


## RETURN SCREEN FOR BOOST+

### Features:

- SHSJP900 joining pole used to join return screen to center screen
- SHSJP1330 joining pole used as stabilising pole on the end
- Can be used with single and back to back Boost+ and Halo+ workstations
- Add return screen to one or both ends of the desk
- Desk height can be adjusted without affecting other users or screens

## BOOST+ WITH FULL HEIGHT SHUSH30+ SCREEN







# rapidline

**Furnx Queensland**

Building 6 East,  
605 Zillmere Road,  
Zillmere QLD 4034

**Furnx New South Wales**

Unit 7 / 2 Southridge Street,  
Eastern Creek NSW 2766

**Furnx Victoria**

3/ 9-19 Leakes Road,  
Laverton North VIC 3026

**Furnx Western Australia**

Unit 2 / 26 Callaway Street,  
Wangara WA 6065

**Furnx South Australia**

2 Pope Court,  
Beverley SA 5009

[www.rapidline.com.au](http://www.rapidline.com.au)