

# New Product Guide

WORKSTATIONS | SEATING | STORAGE | ACCESSORIES



Volume 21



# Contents

<b>CHAIRS</b>	
Lounge Chairs	3-6
Visitor & Breakout Chairs	6-8
Mesh Chairs	9-10
<b>TABLES</b>	
Piedra Coffee Table	11
Eternity High Bar Table	11
<b>WORKSTATIONS</b>	
Halo Static Range	12-14
Boost+ Executive Workstation	15
Halo+ Executive Workstation	16
Casa Executive Range	17-18
<b>ACCESSORIES</b>	
Workstation Accessories	19-21
Locker Accessories	22
<b>UPDATES TO EXISTING PRODUCTS</b>	23-26

# 2025 New Products

**Welcome to the 2025 New Product Guide, where we showcase a curated collection of new innovative furniture solutions designed to transform your workplace.**

Explore our expanded collection, featuring new mesh operator chairs, breakout seating, and lounge options, all designed to enhance comfort and style. Discover our new workstation options, including new additions to the Halo range and brand new executive workstations.

Introducing the pinnacle of adjustable workspaces: the Boost+ and Halo+ Executive range. These two-piece height-adjustable workstations offer unparalleled stability and performance while maximising space and organisation with built-in storage. With a digital control panel boasting 3 pre-set positions, LED display panel, keypad safety lock, and reminder alarm setting, our new Boost+ and Halo+ Executive Workstations ensure seamless transitions between sitting and standing.

Whether you're creating a dynamic collaborative space or a focused, individual workspace, Rapidline products are designed to meet the ever-evolving needs of the modern office.





NEW LOUNGE CHAIRS



LISO-1 FG



LISO-2 FG

LISO  
LOUNGE CHAIRS

Specifications:

LISO-1 FG	1-Seater	830W x 720D x 700H
LISO-2 FG	2-Seater	1310W x 720D x 700H
LISO-3 FG	3-Seater	1810W x 720D x 700H
Weight Rating		135kg   200kg   300kg

Features:

- Liso lounge range available in single, two-seater, and three-seater
- Forest Green PU leather upholstery
- Polished black aluminium feet
- 3 year warranty

Finish:



COSMOS-1 RUST



COSMOS-3 RUST

COSMOS  
LOUNGE CHAIRS

Specifications:

COSMOS-1 RUST	1-Seater	810W x 750D x 740H
COSMOS-2 RUST	2-Seater	1410W x 750D x 740H
COSMOS-3 RUST	3-Seater	2000W x 750D x 740H
Weight Rating		135kg   200kg   300kg

Features:

- Cosmos lounge range available in single, two-seater, and three-seater
- High-density moulded foam with timber inner frame made from larchwood
- Upholstered in Rust fabric with black powdercoat frame
- 5 year warranty

Finish:



NEW LOUNGE CHAIRS



ECLIP-1 BPU



ECLIP-2 BPU

ECLIPSE  
LOUNGE CHAIRS

Specifications:

ECLIP-1 BPU	1-Seater	760W x 730D x 730H
ECLIP-2 BPU	2-Seater	1250W x 730D x 730H
ECLIP-3 BPU	3-Seater	1710W x 730D x 730H
Weight Rating		150kg   200kg   300kg

Features:

- Eclipse lounge range available in single, two-seater, and three-seater
- Black PU leather upholstery with chrome wrap-around frame
- Adjustable feet for levelling purposes
- 3 year warranty

Finish:



KALI4545 ST102



KALI9045 C457

KALI  
OTTOMANS

Specifications:

KALI4545	450W x 450D x 450H
KALI9045	900W x 450D x 450H
Weight Rating	150kg   200kg

Features:

- Kali ottoman range available in two different sizes
- Commercial-grade fabric in Charcoal or Stone
- 150mm radius corners and adjustable levelling feet
- 5 year warranty

Finish:





ASPEN4LE LG/BK



ASPEN4LE OL/BK

# ASPEN

## 4-LEG BASE CHAIR

**Specifications:**

Overall Size	630W x 630D x 840H
Seat Size	480W x 480D x 470H
Weight Rating	135kg

**Features:**

- 4-leg base chair to suit the Aspen range
- Moulded foam seat pan available in Olive or Light Grey fabric
- Black powdercoat base with 32mm diameter steel legs
- 5 year warranty

Finishes:  



ASPEN4STA LG/BK



ASPEN4STA OL/BK

# ASPEN

## SWIVEL CHAIR

**Specifications:**

Overall Size	630W x 630D x 820-880H
Seat Size	480W x 480D x 450-510H
Weight Rating	135kg

**Features:**

- 4-star swivel chair with gas height adjustment to suit the Aspen range
- Moulded foam seat pan available in Olive or Light Grey fabric
- Black powdercoat base with 55mm diameter PU castors
- 5 year warranty

Finishes:  



ASPENSL OL/BK



ASPENSL LG/BK

# ASPEN

## SLED BASE CHAIR

**Specifications:**

Overall Size	630W x 630D x 820H
Seat Size	480W x 480D x 450H
Weight Rating	135kg

**Features:**

- Sled base chair to suit the Aspen range
- Moulded foam seat pan available in Olive or Light Grey fabric
- Black powdercoat base with 16mm diameter steel rod
- 5 year warranty

Finishes:  



EROS-HS750 RUST



EROS-HS750 ST102

# EROS



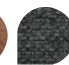

## HIGH STOOL

**Specifications:**

Overall Size	450W x 465D x 835H
Seat Size	405W x 380D x 725H
Weight Rating	135kg

**Features:**

- 4-leg bar stool with circular foot rest
- Available in Stone, Rust, Charcoal, and Olive fabric
- Black powdercoat base
- 5 year warranty

Finishes:    





PIXTUB5STA OL/WS



PIXTUB5STA C457/BL

# PIXEL TUB




SWIVEL CHAIR

**Specifications:**

Overall Size	620W x 620D x 780-825H
Seat Size	420W x 400D x 470-515H
Weight Rating	120kg

**Features:**

- Height adjustable swivel chair with gas strut
- Charcoal or Olive fabric upholstery
- 4-star base in black or white powdercoat
- 5 Year Warranty

Finishes:    



PIXTP4L ALM/ASH



PIXTP4L OL/ASH

# PIXEL

4-LEG BASE CHAIR

**Specifications:**

Overall Size	525W x 510D x 790H
Seat Size	450W x 420D x 440H
Weight Rating	120kg

**Features:**

- New 4-leg steel timber-look base to suit the Pixel chair range
- Seat pan with ribbed stitching detail available in Light Grey fabric, Olive fabric, Almond PU, Amber PU, and French Navy PU
- 5 year warranty

Finishes:     



CAST-450CH BL



CAST-450CH WH

# CAST

BREAK OUT & OUTDOOR CHAIR

**Specifications:**

Overall Size	500W x 640D x 830H
Seat Size	500W x 440D x 450H
Weight Rating	150kg

**Features:**

- Breakout chair to suit the Cast range
- Suitable for outdoor use
- UV Stabilised
- 3 year warranty

Finishes:  



CAST-H750ST WH



CAST-650ST BL

# CAST



BREAK OUT & OUTDOOR STOOLS

**Specifications:**

CAST-650ST	440W x 510D x 960H
CAST-H750ST	440W x 510D x 1060H
Weight Rating	135kg

**Features:**

- Stools to suit the Cast range
- Suitable for outdoor use
- UV Stabilised
- 3 year warranty

Finishes:  

NEW MESH CHAIRS



GUST HD FBK



GUST HD FBK + BREEZE ARMS

GUST  
MESH CHAIR

**Specifications:**  
Overall Size 690W x 630D x 1100-1260H  
Seat Size 540W x 500D x 455-555H  
Weight Rating 160kg

- Features:**
- Height adjustable mesh back chair
  - Black mesh back
  - Black fabric seat pan
  - 700mm diameter black nylon 5-star spider base
  - Height adjustable lumbar support
  - Heavy duty 4-lever ergonomic mechanism with seat slide
  - Gas height adjustment
  - Ratchet height adjustable back rest
  - Back height of 620mm
  - BIFMA tested
  - AFRDI certified
  - Adjustable arms available for extra
  - 10 year warranty

Finish:

NEW MESH CHAIRS

CASCADE  
MEDIUM BACK MESH CHAIR

**Specifications:**  
Overall Size 625W x 625D x 1015-1115H  
Seat Size 510W x 520D x 500-600H  
Weight Rating 110kg

- Features:**
- Black mesh back rest and black upholstered seat pan
  - Synchro mechanism gas lift with back rest and seat pan tilt
  - Adjustable lumbar support
  - Includes removable adjustable arms
  - 5 year warranty

Finish:



CASCADE MB BK



AIR FBK



AIRTAB BL

AIR  
MESH BACK TRAINING CHAIR

**Specifications:**  
Overall Size 640W x 555D x 835H  
Seat Size 460W x 490D x 445H  
Weight Rating 110kg

- Features:**
- Foldable training chair with nesting capabilities
  - Black mesh back rest with black fabric seat
  - Fixed arm rests
  - Black tablet arm available for extra
  - 5 year warranty

Finish:



## NEW TABLES

### PIEDRA

#### COFFEE TABLE

##### Specifications:

Overall Size 1200W x 600D x 420H

##### Features:

- Grey Carrara marble table top
- 12mm thick sintered stone table top
- 18mm thick MFC bottom pad (on table top)
- Black powdercoat steel frame
- 5 year warranty

Finish:



### ETERNITY

#### LONG HIGH BAR TABLE

##### Specifications:

D-EHBT3075 3000W x 750D x 1050H  
D-EHBT3675 3600W x 750D x 1050H  
D-EHBT3690 3600W x 900D x 1050H  
D-EHBT4275 4200W x 750D x 1050H

##### Features:

- Two-piece table top with intermediate leg and dual cross bar for stability
- Stylish 60mm x 30mm splayed leg available in black or white powdercoat
- E0 melamine top in Natural White or Natural Oak
- 5 year warranty

Finishes:



## NEW WORKSTATIONS

### HALO STATIC

#### SINGLE SIDED WORKSTATION

##### Specifications:

Overall Size 750D x 730H  
Available Top Widths 1200mm, 1500mm, 1800mm

##### Features:

- Fixed height workstation to match the Halo+ range
- Telescopic frame 1100-1800mm wide
- Round leg design with adjustable levelling feet
- 70mm diameter column size
- Foot size of 700mm
- Underframe finished in white or black powdercoat
- E0 rated melamine tops available in Natural White or Natural Oak
- Table tops with rigid edging and 50mm D scallop cut out to rear
- Overall height of 1330mm when fitted with privacy screens
- 10 year warranty

##### Add-ons

- Fabric privacy screens available in black fabric with white frame or grey fabric with black frame
- Cable trays for cable management in black or white powdercoat to suit workstation frame
- Flexible cable snakes to carry cables from desk to cable tray
- Cable tray bridge for use between adjoining desks
- Sleeves to cover cable feed holes when not required or at end of workstation runs

Top Finishes:



Screen Finishes:



Base Finishes:





HS2P1275 NO/BL



HS2PCT1275 NW/WS



HS2PWS1575 NO/WS



HS2PWSCT1875 NW/BL

# HALO STATIC

## BACK TO BACK WORKSTATION

Specifications:

Overall Size 1500D x 730H  
Available Top Widths 1200mm | 1500mm | 1800mm

Features:

- Fixed height double-sided workstation to match the Halo+ range
- Telescopic frame 1100-1800mm wide
- Round leg design with adjustable levelling feet
- 70mm diameter column size, foot size of 700mm
- Desk depth of 750mm per user
- Underframe finished in white or black powdercoat
- E0 rated melamine tops available in Natural White or Natural Oak
- Table tops with rigid edging and 50mm D scallop cut out to rear
- Overall height of 1330mm when fitted with privacy screens
- 10 year warranty

Add-ons

- Fabric privacy screens available in black fabric with white frame or grey fabric with black frame
- Cable trays for cable management in black or white powdercoat to suit workstation frame
- Flexible cable snakes to carry cables from desk to cable tray
- Cable tray bridge for use between adjoining desks
- Sleeves to cover cable feed holes when not required or at end of workstation runs

Screen Finishes:  

Top Finishes:  

Base Finishes:  



HSCNR1P1515 NW/BL



HSCNRCT1P1515 NO/BL



HSCNRWS1P1815 NW/WS



HSCNRWSCT1P1818 NO/WS

# HALO STATIC

## CORNER WORKSTATION

Specifications:

Overall Size 750D x 730H  
Available Top Sizes 1500 x 1500mm | 1800 x 1500mm | 1800 x 1800mm

Features:

- Fixed height corner workstation to match the Halo+ range
- Telescopic frame 1040-2150mm wide
- Round leg design with adjustable levelling feet
- 70mm diameter column size
- Foot size of 700mm
- Underframe finished in white or black powdercoat
- E0 rated melamine tops available in Natural White or Natural Oak
- Table tops with rigid edging and 50mm D scallop cut out to rear
- Overall height of 1330mm when fitted with privacy screens
- 10 year warranty

Add-ons

- Fabric privacy screens available in black fabric with white frame or grey fabric with black frame
- Cable trays for cable management in black or white powdercoat to suit workstation frame
- Flexible cable snakes to carry cables from desk to cable tray
- Cable tray bridge for use between adjoining desks
- Sleeves to cover cable feed holes when not required or at end of workstation runs

Screen Finishes:  

Top Finishes:  

Base Finishes:  



NEW EXECUTIVE WORKSTATIONS



BERI187 NO/WS-NOW

BELE189 NO/BL-NOW



BELEMP217 NW/WS-NOW

# BOOST+

EXECUTIVE WORKSTATION

**Specifications:**

Available Sizes	2020 x 2011mm   2020 x 1936mm   2270 x 1936mm
Overall Height	620 - 1270H
Side Cabinet Size	1800W x 500D x 520H

**Features:**

- A two-piece, height adjustable workspace with storage
- Available in left or right-hand configurations to suit any office layout
- AFRDI certified Boost+ dual motor frame
- Digital control panel with 3 pre-set positions, LED display panel, keypad safety lock and reminder alarm setting
- 120kg lifting capacity and max speed of 38mm per second
- Telescopic frame 1100-1800mm wide
- 700mm wide foot with 90mm x 60mm column size leg
- Optional perforated modesty panel for privacy when visible from the front, available in black or white powdercoat
- Side cabinet includes 2 x pull out drawers, 1 x double swing door cupboard, and 1 x single swing door cupboard with adjustable shelf
- Drawers fitted with cyberlock 4-digit manual combination lock
- Frame finished in black or white powdercoat
- Natural Oak side cabinet with Natural White drawers and doors
- EO rated melamine top in Natural Oak or Natural White
- No cable entry holes or scallops in table top
- 10 year warranty

Top Finishes:



Side Cabinet Finish:



Base Finishes:



NEW EXECUTIVE WORKSTATIONS



HERI189 NW/BL-NOW

HELE217 NW/WS-NOW



HERI189 NO/WS-NOW

# HALO+

EXECUTIVE WORKSTATION

**Specifications:**

Overall Sizes	2020 x 2011mm   2020 x 1936mm   2270 x 1936mm
Overall Height	620 - 1270H
Side Cabinet Size	1800W x 500D x 520H

**Features:**

- A two-piece, height adjustable workspace with storage
- Available in left or right-hand configurations to suit any office layout
- AFRDI certified Halo+ dual motor frame
- Digital control panel with 3 pre-set positions, LED display panel, keypad safety lock and reminder alarm setting
- 120kg lifting capacity and max speed of 38mm per second
- Telescopic frame 1100-1800mm wide
- Rounded leg and foot with 70mm diameter column size
- Optional perforated modesty panel for privacy when visible from the front, available in black or white powdercoat
- Side cabinet includes 2 x pull out drawers, 1 x double swing door cupboard, and 1 x single swing door cupboard with adjustable shelf
- Drawers fitted with cyberlock 4-digit manual combination lock
- Frame finished in black or white powdercoat
- Natural Oak side cabinet with Natural White drawers and doors
- EO rated melamine top in Natural Oak or Natural White
- No cable entry holes or scallops in table top
- 10 year warranty

Top Finishes:



Side Cabinet Finish:



Base Finishes:





CP-LEF218 NO/WS-NOW



CL-LEF218 NO/BL-NOW

## CASA

### EXECUTIVE WORKSTATION

#### Specifications:

Overall Size	2000W x 1800D x 748H
Desk Size	1800W x 800D x 748H
Side Cabinet Size	1800W x 600D x 620H

#### Features:

- Workstation to suit the new Casa Executive range
- Casa table top and modesty panel paired with Casa side cabinet to create a cockpit style workstation with storage
- Left-hand side and right-hand side configurations available to suit any office layout
- Use with Eternity, Profile, or Loop legs to suit the Infinity range
- 43mm tabletop thickness
- Shark nose edge profile to table top
- Modesty panel height of 350mm
- Worksurface includes a cable tidy box with brush strip dualway lid
- 2 x lockable drawers fitted with cyberlock 4-digit combination lock and soft close runners
- 1 x swing door cupboard with adjustable shelf with soft close hinges
- 1 x open shelf compartment with 1 x adjustable shelf
- 350mm H modesty panel for privacy when visible from the front
- Legs available in black or white powdercoat
- Natural Oak carcass with Natural White profiles, modesty panel, doors and drawers
- 5 year warranty

Top & Side Cabinet Finish: 

Leg Finishes:  



CE-RIG218 NO/WS-NOW

## CASA

### SWING DOOR CUPBOARD

#### Specifications:

Overall Size	1800W x 400D x 800H
--------------	---------------------

#### Features:

- Swing Door Cupboard to suit Casa Executive range
- 4 x swing doors and 2 x adjustable shelves
- Natural Oak outer carcass and swing doors
- Natural White inner profiles
- 5 year warranty

Finish: 



CAS-SDC1808 NO/NW



CAS-SU1812 NO/NW

## CASA

### SHELVING UNIT

#### Specifications:

Overall Size	1800W x 400D x 1250H
Storage Cubes Size	354W x 354D x 363H
Storage Opening Size	966W x 354D x 362H

#### Features:

- Shelving and storage unit to suit Casa Executive range
- 1 x double swing door cupboard with 1 x adjustable shelf inside
- 6 x storage cubes and 1 x storage opening
- Natural Oak outer carcass and swing doors
- Natural White inner profiles
- 5 year warranty

Finish: 





EXDSC185-LEF



EXDSC185-RIG

# BOOST & HALO

## EXECUTIVE SIDE CABINET

**Specifications:**

Overall Size 1800W x 500D x 520H

**Features:**

- Choice of left or right-hand orientation
- Natural Oak carcass with Natural White drawer and door fronts
- Drawers fitted with cyberlock 4-digit manual combination lock
- 2 x pull out drawers, 1 x double swing door cupboard, 1 x single swing door cupboard with adjustable shelf
- 5 year warranty

Finish:



EPS159 MG



EPS189 BK

# ECO PANEL

## 900MM HIGH SCREENS

**Specifications:**

Overall Size 27D x 900H  
Available Widths 1200mm | 1500mm | 1800mm

**Features:**

- 900mm high Eco Panel desk mounted screens
- Polyester fibre panel with pinnable surface and radial corners
- Moisture resistant and anti-mildew
- Available in Black or Marble Grey
- Screen mounting clamps sold seperately
- 3 year warranty

Finishes:



TUDMT1117 BL



TUDMT1117 WS

# TELESCOPIC

## CABLE TRAY

### UNDER DESK MOUNT CABLE TRAY

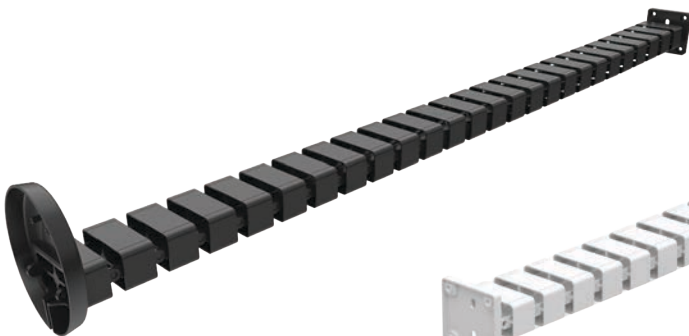
**Specifications:**

Overall Size 1100-1700W x 122D x 100H

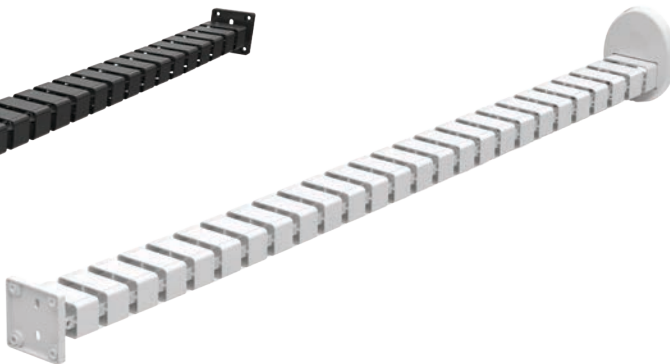
**Features:**

- Telescopic under desk mount cable tray for Boost and Halo workstations
- Provisions for up to 4 x 4GPO modules or 8 x data
- Internal dimensions of 115mm D x 81mm H
- 10 year warranty

Finishes:



BH-1300SNAKE BL



BH-1300SNAKE WH

# CABLE SNAKE

## FLOOR TO UNDER DESK SNAKE

**Specifications:**

Overall Size 67W x 35D x 1300H

**Features:**

- 4 x segregation channels per snake
- One end fitted with weighted foot and one end fitted with provisions to be screwed to underside of desktop
- Screws for under desk fitting not included
- 3 year warranty

Finishes:

# ARM SLEEVE

## SINGLE ARM SLEEVES

Specifications:

- B2-RIGSSLVE | HP-RIGSSLVE
- B2-LEFSSLVE | HP-LEFSSLVE
- Single sleeve for right side\*
- Single sleeve for left side\*

\*Right or left-hand side as seen when sitting at desk

Features:

- Left and right-side sleeves to suit Boost and Halo single sided cable tray and screen mounting arm
- Use to cover cable feed holes when not required or at the end of workstation runs
- Available in black or white powdercoat to suit workstation frame
- 10 year warranty

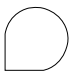

Finishes:  

# CROSS BAR SLEEVE

## BACK TO BACK CROSSBAR SLEEVES

Features:

- Sleeve to suit cross bar on Boost and Halo back-to-back workstations
- Use to cover cable feed holes on cross bar when not required or at the end of workstation runs
- Available in black or white powdercoat to suit workstation frame
- 10 year warranty

Finishes:  



B2-LEFSSLVE WS & B2-RIGSSLVE WS



HP-LEFSSLVE BL & HP-RIGSSLVE BL



B2-BTBSLVE WS



HP-BTBSLVE BL

# LOCKER STANDS

## SEATS & STANDS FOR BANK OF 2 & 3

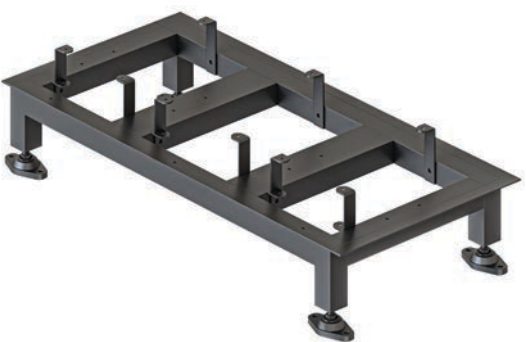
Specifications:

GLST610-305	For 2 lockers	610W x 455D x 150H
GLST915-305	For 3 lockers	915W x 455D x 150H
GSS610-305	For 2 lockers	610W x 895D x 450H
GSS915-305	For 3 lockers	915W x 895D x 450H

Features:

- Raises lockers off floor to allow for easy cleaning and/or seating
- Locker stands and seats to bank 2 or 3 lockers
- Teak-coloured mod wood timber slats with a black powdercoat frame
- Suitable for 305mm wide lockers only
- 3 year warranty

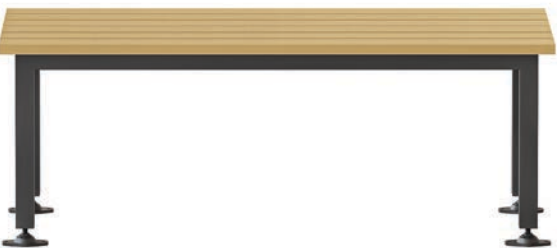
Finish: 



GLST915-305 TEAK/BK  
Stand for 3 lockers



GSS610-305 TEAK/BK  
Seat and stand for 2 lockers



GBS-1200 TEAK/BK



# BENCH SEAT

## SINGLE SIDED BENCH SEAT

Specifications:

Overall Size	1200W x 450D x 450H
--------------	---------------------

Features:

- Single sided bench seat
- Teak-coloured mod wood timber slats with black powdercoat frame
- Adjustable levelling feet with bolt down provisions
- 3 year warranty

Finish: 





## UPDATES TO EXISTING PRODUCTS



MYK RUST



### MYK SINGLE LOUNGE CHAIR

#### Specifications:

Overall Size	650W x 710D x 800H
Seat Size	630W x 480D x 430H
Weight Rating	135kg

**NEW** Rust fabric upholstery available  
Refer to Volume 21 Catalogue for product features

**NEW**  
Finishes: 



CSA C457



CSA2SE ST102

### CARDINAL LOUNGE CHAIRS

#### Specifications:

CSA	1 Seater	780W x 800D x 880H
CSA2SE	2 Seater	1335W x 800D x 880H
Weight Rating		150kg   200kg

**NEW** Charcoal and Stone fabric upholstery available  
Refer to Volume 21 Catalogue for product features

**NEW**  
Finishes: 





PIXSLED ALM/BL



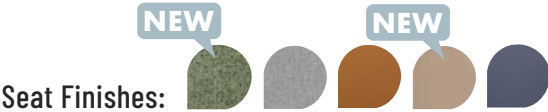
PIXSLED OL/WS

# PIXEL

## SLED BASE CHAIR

**Specifications:**  
Overall Size 550W x 550D x 790H  
Seat Size 450W x 420D x 440H  
Weight Rating 120kg

**NEW** Olive fabric and Almond PU upholstery available  
Refer to Volume 21 Catalogue for product features



SGS



PIX5STAR OL/BL



PIX5STAR-WA ALM/WS

# PIXEL

## SWIVEL CHAIR

**Specifications:**  
Overall Size 630W x 630D x 830-875H  
Seat Size 450W x 420D x 470-515H  
Weight Rating 120kg

**NEW** Olive fabric and Almond PU upholstery available  
Refer to Volume 21 Catalogue for product features



PIXSTOOL73 ALM/BL



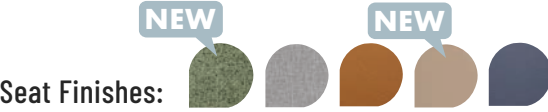
PIXSTOOL63 OL/WS

# PIXEL

## BAR STOOLS

**Specifications:**  
PIXSTOOL63 480W x 535D x 845H  
PIXSTOOL73 480W x 535D x 945H  
Weight Rating 110kg

**NEW** Olive fabric and Almond PU upholstery available  
**NEW** size available: 845mm high stool  
Refer to Volume 21 Catalogue for product features



MIRAGE HB GTANL



MIRAGE MB GTANL

# MIRAGE

## MEDIUM & HIGH BACK CHAIR

**Specifications:**  
MIRAGE HB 700W x 700D x 1140-1200H  
MIRAGE MB 700W x 700D x 960-1020H  
Weight Rating 120kg

**NEW** Tan PU upholstery available  
Refer to Volume 21 Catalogue for product features







# rapidline

**Furnx Queensland**

Building 6 East,  
605 Zillmere Road,  
Zillmere QLD 4034

**Furnx New South Wales**

Unit 7 / 2 Southridge Street,  
Eastern Creek NSW 2766

**Furnx Victoria**

3/ 9-19 Leakes Road,  
Laverton North VIC 3026

**Furnx Western Australia**

Unit 2 / 26 Callaway Street,  
Wangara WA 6065

**Furnx South Australia**

2 Pope Court,  
Beverley SA 5009

[www.rapidline.com.au](http://www.rapidline.com.au)