

ALOHA CHAIR

PRODUCT SPECIFICATION SHEET



PRODUCT FEATURES

- White Elastic Polypropylene Seat and Back
- Silver 25mm Solid Steel Legs
- Perfect Break out or Meeting Chair
- Seat Covers Available as Extras
- Black or Blue Seat covers available
- Protective Steps for Stacking
- Virgin PP Plus GF 35% Material Used Throughout
- Air Ventilation in Back Rest
- Elastic Back Rest Naturally Fits to your Back Curve
- GREENGUARD Accredited

PRODUCT DIMENSIONS

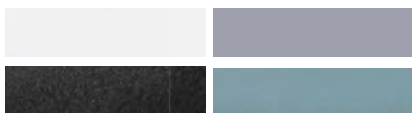
- Seat Width - 430mm
- Seat Depth - 430mm
- Back Height - 370mm

BOX DIMENSIONS

- For Box of 4 Chairs
- Length - 966mm
- Width - 680mm
- Depth - 508mm
- Weight - 24.7kgs
- Cubic Meter - 0.34

FINISHES

- White Elastic Polypropylene
- Silver Legs
- Black or Blue Seat Covers



WARRANTY

- 5 Year Warranty on Chair
- 2 Year Warranty on Seat Covers



rapidline
FURNITURE FOR TODAY